



MASURI

**STRONGER
SAFER
PROTECTION
FOR YOU**

2022

MASURI

CRICKET

A WINNING PARTNER FOR
PROTECTIVE EQUIPMENT
AND TEAMWEAR FROM
GRASSROOTS CLUBS THROUGH
TO PROFESSIONAL TEAMS

PROTECTING PLAYERS
SINCE 1991



P R O T E C T I O N

THE MOST TRUSTED PROTECTION BRAND IN CRICKET

Welcome to Masuri, THE cricket protection specialists and firm favourites with international and first-class players. Founded in South Africa over a decade ago, our knowledge and experience when it comes to impact absorption and protective products are unrivaled in cricket. Having revolutionised the cricket helmet market; we have now applied all of our intellectual property into an exciting new batting and wicket keeping range of products - continuing to set the standard of cricket equipment.

Passionate about safety, inspired by design and obsessed with technology, we're self-driven to innovate our products to the highest possible levels of protection, quality and comfort, often benchmarking the world of protection devices.

At Masuri, we are a team of cricket enthusiasts; we know the game. From design to engineering, our products are made with the player in mind, ensuring safety doesn't compromise performance, keeping them safe and comfortable.



ABSORB



DEFLECT



PROTECT

OUR CORE VALUES



PROTECTION

All Masuri Protection products go through rigorous concept-prototype development and is subjected to high velocity impact testing in order to measure and confirm its performance.



TECHNOLOGY

Laboratory testing analysis provides us with vital data to help us continually improve our products' performance. Thanks to this data, we have been able to develop new innovative safety features that vastly improve player safety.



QUALITY

Masuri products boast innovative designs which have been subject to stringent testing. Our approach means that cricketers can be assured their protection is of the highest quality.



COMFORT

One of the most important parts of our product development is ensuring that our products are ergonomically designed. It is essential to provide a product that does not hinder the player during a game, but also that is comfortable to wear.



SERVICE

Our team is committed to providing our customers with exclusive levels of world-class service. We are proud to be able to provide vastly superior lead-times.

**THE BEST OF BRITISH.
DESIGN. DEVELOPMENT. TECHNOLOGY.**



MANUFACTURERS FIRST. MERCHANDISERS SECOND.

Leading the way and defining the industry standard in protection manufacturing, we are the only cricket protection manufacturer whose factories and processes are ISO accredited, giving you reassurance that all of our products are made to a consistently high standard.

Whether inspecting the grille of a helmet or the padding of a batting glove, your product is designed, made and tested to the highest levels.

Inspired beyond the cricket world, our products originate from 30 years of innovative manufacturing processes, sharing knowledge and experience from aerospace and automotive industries.

EFFICIENT PROCESSES WITH UNRIVALLED ATTENTION TO DETAIL

INNOVATED NOT IMITATED

With a world-class, award winning design and engineering team, we at Masuri are in a prime position to stay ahead of the game. Striving to develop better and stronger safety products that are comfortable and offer the best player protection on the market.

Masuri is proud to be the market leaders in safety products within the cricket world. We were the first to introduce the titanium visor, fielding visor and wicket keeping helmet. This continues to be true for never-before-seen safety features such as thumb claw, wrist bar and StemGuard to name but a few all under the Masuri Applied Technologies banner.

When the ground breaking Vision Series range was released, Masuri become the first brand to offer a helmet compliant with the ICC driven 2013 safety standard and our StemGuard is the highest performing neck protector available. We take innovation and protection seriously - never resting on our laurels, ensuring we always lead the way rather than follow.

AIRFLOW
COOLING SYSTEM

SINGLE SHELL
PROTECTION SYSTEM

KNEE BLADE
Patent pending 01/2019

THUMB CLAW
Patent pending 01/2019

META SHIELD
Patent pending 01/2019

WRIST BAR
Patent pending 01/2019

PRO-FOAMS

MERINO WOOL
FABRIC TECHNOLOGY

KNEE WING
Patent pending 01/2019



**MASURI WILL CONTINUE TO SET THE STANDARD
AND ALWAYS STRIVE TO BE THE *PLAYERS' CHOICE*.**

BEST PROTECTION. BEST PERFORMANCE.

At Masuri, we are passionate about keeping you playing to the highest level of performance.

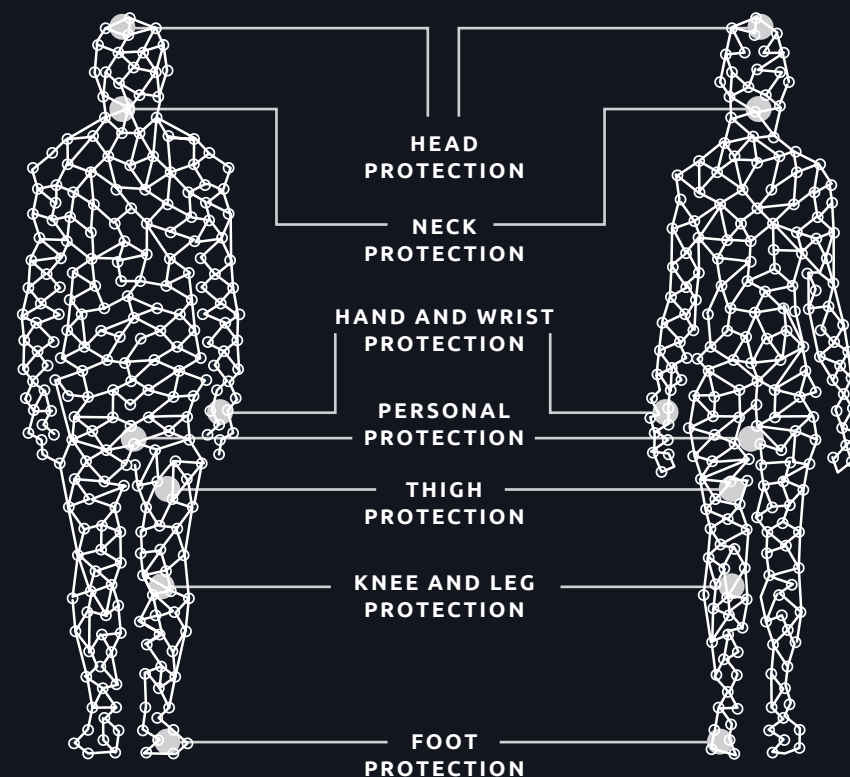
There is extensive research into both the physical and psychological impact that an injury can have on sports men and women.

Even the smallest of grazes or bruises can have a negative effect on the way you approach your game – which in itself can put you at risk of further injury. Do you dive for a catch with the exact same conviction with a bruised finger from a previous game? Research would suggest not.

Not every shot will be played as you'd like and the Masuri protection range has been developed with the bad balls, shots and catches in mind, protecting you most in the areas that need it.

KEEPING YOU PLAYING

AN EXTENSIVE RANGE OF
PROTECTION PRODUCTS
FOR BOTH SPORTS
WOMEN AND MEN.



PROTECTING YOUR INVESTMENT

Sport requires investment. Whatever your playing level and whatever you consider a commitment you make sacrifices to realise your passion for cricket.

It doesn't matter if you're an owner of a team, a professional with a strict training and diet programme or just spending time away from home, you're investing to play - and we believe in protecting that investment.

An injury will impact your day to day life that normally leads to a negative financial affect. Whether you're a weekend enthusiast that has to take a time off work or a professional player that is signed off for a number of weeks you owe it to yourself, your team and any other stakeholders in your life to do the best to protect yourself.

**MONTHS OF PHYSICAL, PSYCHOLOGICAL
AND FINANCIAL INVESTMENT MEANS
NOTHING IF YOU CAN'T PLAY DUE TO INJURY**



HEAD PROTECTION

MASURI®



SINGLE SHELL PROTECTION SYSTEM

Single layered, lightweight construction, providing affordable but still durable protection. Compliant with BS 7928:2013. Only available on the Original Series.

SINGLE SHELL
PROTECTION SYSTEM

AIRFLOW

The innovative 3-layer protection system incorporates strategically placed vents in the inner and outer shells and air channels throughout the cavity, allowing air to circulate freely at all times, keeping the wearer cool.

AIRFLOW
COOLING SYSTEM

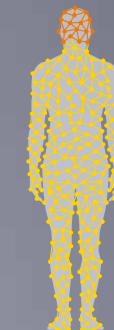
EYE-LINE GRILLE

The Eye-line Grille is an additional top bar, placed on the eye-line, which presents a greater surface area to the ball on impact. The rear bar forces the ball upwards towards the solid part of the peak and deflects it away from the player's face.

EYE-LINE
GRILLE SYSTEM
Patent protected GB2498490

“THE
FORMULA
ONE OF CRICKET
HELMETS.”

Ashley Giles *Managing Director
of England Men's Cricket*



CRICKET
HELMETS

THE SAFEST AND
LIGHTEST HELMETS
AVAILABLE.

British designed and manufactured single shell protection, providing a strong and lightweight helmet for the cricketer that prefers the traditional style Masuri helmet.

All new safety requirements are met and surpassed, as one would expect from Masuri. The Original Series MK2 utilises the soft cell foam front and back liners to contour to your head shape, ensuring a snug fit every time without the need for a cumbersome adjuster.

Masuri combines modern manufacturing techniques and the latest technology in plastics, along with Masuri’s traditional DNA in order to bring back the Core Range.

E LINE

U.K. designed and manufactured single shell protection, providing an affordable, lightweight and traditional style helmet designed with patented Eye-line grille technology for greater facial safety.

T LINE

Single shell protection and advanced titanium grille, providing an affordable and lightweight cloth covered helmet for the cricketer that prefers the traditional Masuri helmet style.

C LINE PLUS

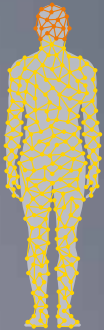
U.K. designed and manufactured single shell protection, providing an affordable and lightweight helmet. This model is designed with a partially cloth covered shell.

C LINE

U.K. designed and manufactured single shell protection, providing an affordable and lightweight helmet.



Model	E LINE	T LINE	C LINE PLUS	C LINE
Cloth	✓	✓	✓	✗
Customisable	✓	✓	✓	✗
Safety Features	SINGLESHELL PROTECTION SYSTEM	SINGLESHELL PROTECTION SYSTEM	SINGLESHELL PROTECTION SYSTEM	SINGLESHELL PROTECTION SYSTEM
Colours available	<div><div>Navy</div><div>Maroon</div><div>Black</div><div>Green</div><div>Royal Blue</div><div>Red</div><div>Yellow</div><div>Sky Blue</div></div>		<div><div>Navy</div><div>Maroon</div><div>Black</div><div>Green</div></div> <div>With navy or black peak</div>	<div><div>Navy</div><div>Black</div></div>
Grille available	Titanium / Steel	Titanium / Steel	Steel	Steel
WK available	✓	✓	✗	✗
Junior available	✗	✓	✓	✓



CUSTOM HELMETS

CUSTOM
HELMETSSTATE-OF-THE-ART
DESIGN AND ENGINEERING

Your kit should be an extension of your team. All of our products are fully customisable whether you choose to have a fully bespoke design from our made to order range, or add logos to our pre-made kit for a speedy delivery, you can create your kit with a wide range of options available to you.

We take huge amounts of pride in the quality of our service and products – the way they are designed, customised and delivered – so your team can be confident that they will look the part.

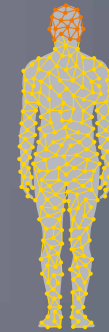


Customisation is available on the following helmet models:

E LINE

T LINE

C LINE PLUS



NECK PROTECTION

STEMGUARD

THE STEMGUARD IS A CLIP-ON ATTACHMENT, WHICH PROVIDES ADDITIONAL PROTECTION FOR A BATSMAN'S VULNERABLE NECK.

The StemGuard attaches to the back of the Masuri Helmet Range. The attachment has been designed to give batsman free movement, while offering protection to the vulnerable region at the back of the head and neck.

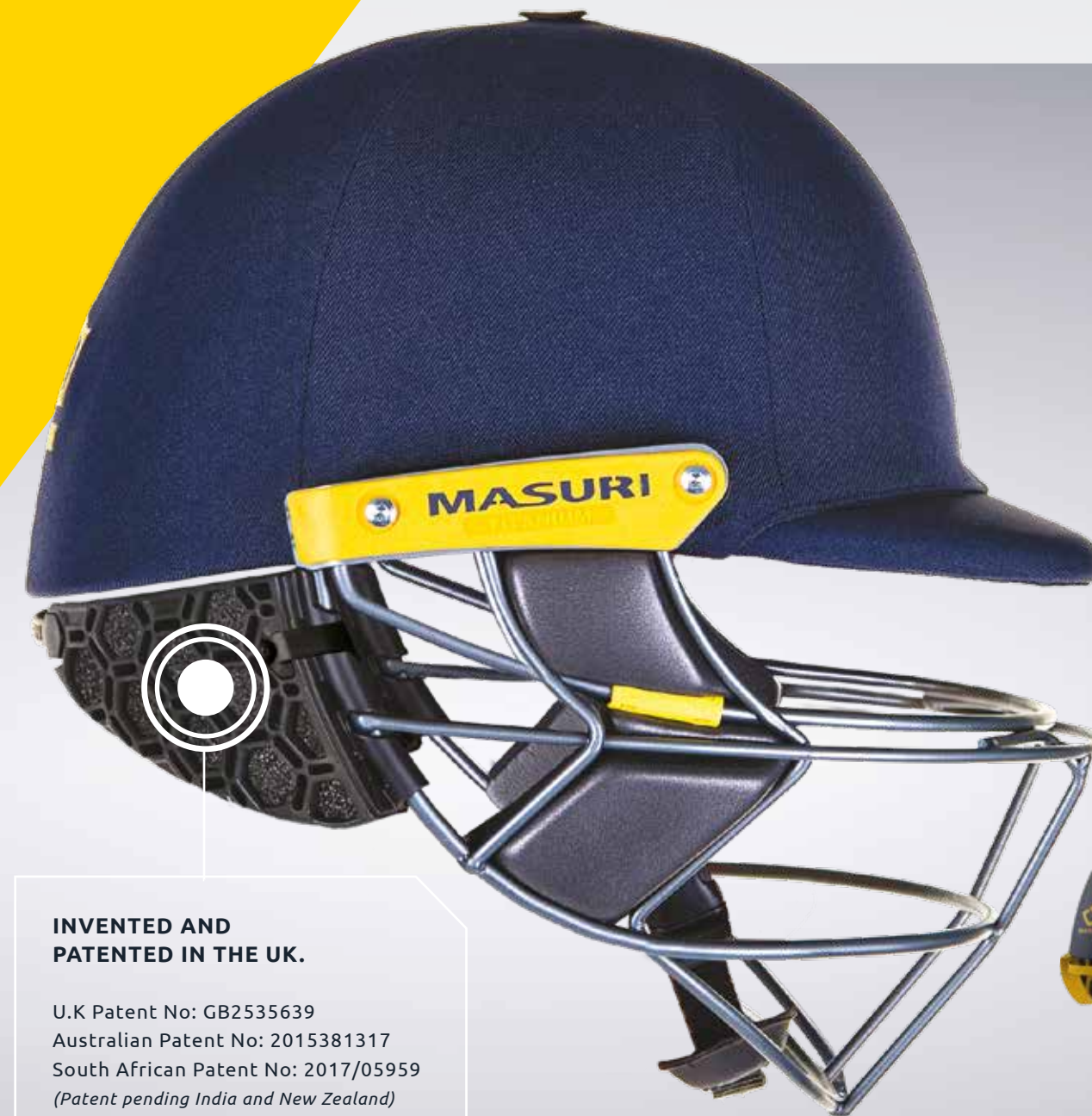
Masuri extensively studied all information available in order to develop StemGuard. We have worked with a number of cricket's national governing bodies during the development to take StemGuard from concept to a production capable prototype within three months.

This new innovation by Masuri combines an impact modified TPU honeycomb with military grade crush foam in order to maximise impact absorption, giving players much more confidence when batting.

Also available is the StemGuard Lite, our junior only StemGuard option that has been thoroughly tested for suitability in a junior cricket environment.

**I TRULY BELIEVE THAT
THE MASURI STEMGUARD
SAVED MY LIFE**

*Kaushal Silva speaking after being struck with force,
directly on the StemGuard whilst fielding at short leg
in Sri Lanka in 2015.*



INVENTED AND PATENTED IN THE UK.

U.K Patent No: GB2535639
Australian Patent No: 2015381317
South African Patent No: 2017/05959
(Patent pending India and New Zealand)

COMPLIANT WITH:
BS 7928:2013+A1:2019



STEMGUARD ADVANCED
AVAILABLE IN SENIOR AND JUNIOR SIZES

COLOURS AVAILABLE

Black



STEMGUARD LITE
ONLY AVAILABLE IN JUNIOR SIZE

COLOURS AVAILABLE

Black Yellow





MAXIMUM COMFORT - FIT YOUR
HELMET LIKE THE PROFESSIONALS

You are unique meaning no head shape is the same. We have developed a range of additional and replacement pro foams for the inner shell of your helmet so that you can achieve the perfect fit, or keep your helmet playing for longer.

STANDARD PADDING

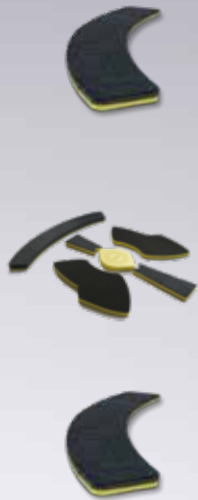


VS INTERNAL PADDING, FULL SET VS INTERNAL PADDING, FULL SET VS INTERNAL PADDING, FULL SET	STANDARD THICK EXTRA THICK
OS2 INTERNAL PADDING, FULL SET OS2 INTERNAL PADDING, FULL SET OS2 INTERNAL PADDING, FULL SET	THIN MEDIUM THICK
VS SWOPPA VS SWOPPA VS SWOPPA VS SWOPPA	BASIC 8MM 12MM 20MM

EXTRA ABSORBENT PADDING



VS SUPER SOPPA SWOPPA VS SUPER SOPPA SWOPPA VS SUPER SOPPA SWOPPA VS SUPER SOPPA SWOPPA VS SUPER SOPPA SWOPPA	9MM 12MM 15MM 18MM 21MM
OS2 SUPER SOPPA SWOPPA OS2 SUPER SOPPA SWOPPA OS2 SUPER SOPPA SWOPPA OS2 SUPER SOPPA SWOPPA OS2 SUPER SOPPA SWOPPA	9MM 12MM 15MM 18MM 21MM



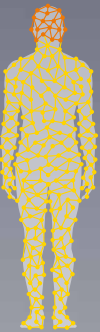
PRO FOAMS PADDING (impact absorbing padding)

OS2 REAR PRO-FOAMS OS2 REAR PRO-FOAMS OS2 REAR PRO-FOAMS OS2 REAR PRO-FOAMS	9MM 12MM 15MM 18MM
VS PRO-FOAM PADDING, FULL SET VS PRO-FOAM PADDING, FULL SET VS PRO-FOAM PADDING, FULL SET	STANDARD THICK EXTRA THICK
VS PRO-FOAM SWOPPA VS PRO-FOAM SWOPPA VS PRO-FOAM SWOPPA VS PRO-FOAM SWOPPA	7MM 9MM 12MM 15MM

EAR PADS WITH CLIPS



VS ELITE / TEST SENIOR VS CLUB SENIOR VS CLUB JUNIOR	- - -
OS2 TEST SENIOR OS2 TEST JUNIOR	- -



HAND/WRIST PROTECTION

PRO-FOAMS

A combination of graded foams that increases impact absorption. Different foam combinations ensure the optimum balance of protection and flexibility in high risk impact areas.

THUMB CLAW

Reinforced PRO FOAM that hooks around the tip of the thumb offering greater protection when impacted by the ball. Ergonomically designed to fit within the construction of glove without compromising movement or grip on the bat.

META SHIELD

Reinforced PRO FOAM providing targeted and increased protection of the metacarpal knuckle. Integrated within the glove (over the index finger of the bottom hand and little finger in the top hand) without impeding grip.

WRIST BAR

Reinforced PRO FOAM that protects both the radius and ulna bones in the wrist. Integrated into the existing wrist band of the glove ensuring that playing style is unaffected.

ON AVERAGE A BROKEN FINGER TAKES SIX WEEKS TO MEND

PRO-FOAMS®

THUMB CLAW®

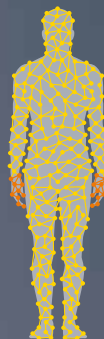
Patent pending 01/2019

META SHIELD®

Patent pending 01/2019

WRIST BAR®

Patent pending 01/2019



HAND/WRIST PROTECTION

THE BATTING
GLOVE WITH
A DIFFERENCE

THE MASURI BATTING
GLOVE RANGE BRINGS
PROTECTION TO AREAS
THAT HAVE NEVER BEEN
PROTECTED BEFORE
SAFEGUARDING YOU
AGAINST THE BALLS
YOU CAN'T PLAN FOR!

Responding to the incredible amount of injuries that occur to a player's fingers, hand and wrist, we have developed the batting glove to include new and innovative features developed by players for players.

E LINE^{PRO}

A modern take on the traditional sausage finger construction favoured by professional players globally. Replacing original cotton stuffing filling with advanced Masuri PRO FOAM technology.

E LINE

A split finger, multi-flex construction featuring all the new Masuri applied technology features resulting in the most advanced level of protection seen in a batting glove.

T LINE

A hybrid construction of split multi flex design and new advanced sausage finger construction resulting in a popular protection solution for players of all levels.

C LINE

A split finger multi flex construction providing a core level of protection featuring a selection of Masuri applied technologies resulting in a practical protection solution.



Model	E LINE PRO	E LINE	T LINE	C LINE	E LINE JR
Finger type	Sausage	Split	Sausage/Split	Split	Split
Thumb claw	✓	✓	✓	✗	✗
Meta shield	✓	✓	✓	✗	✗
Wrist bar	X4	X4	X1	X1	X1
Thumb piece	3	3	2	2	2
Lead finger cages	4	4	3	2	2
Sheepskin palm	✓	✓	✓	✓	✓
Full leather thumb	✓	✓	✗	✗	✗
Leather / Mesh thumb	✗	✗	✓	✓	✓
Inside towel lining	✓	✓	✓	✓	✓
Sizes	M, SM	M, SM	M	M	YTH, J, JS

LEG PROTECTION



PRO-FOAMS®

KNEE BLADE®
Patent pending 01/2019

KNEE WING®
Patent pending 01/2019

PRO-FOAMS

A combination of graded foams that increases impact absorption. Different foam combinations ensure the optimum balance of protection and flexibility in high risk impact areas.

KNEE BLADE

Reinforced PRO FOAM positioned in front of the traditional knee bolster of a batting pad. Integrated within the pad, reducing the risk of a ball penetrating the knee roll without impacting running movement or comfort.

Available in 10L, 10 and 6 depending on the PRO FOAM composition.

KNEE WING

Reinforced PRO FOAM that protects the vulnerable side impact zone of the knee joint. Strategically positioned on the front of the pad without having any negative impact on movement or comfort.

A BLOW TO THE KNEE CAN AFFECT A PLAYERS MOBILITY AND CONCENTRATION WHICH COULD BE THE DIFFERENCE BETWEEN FINISHING THAT ONCE IN A SEASON INNINGS OR NOT.



THE BATTING PAD DONE DIFFERENTLY

THE MASURI BATTING PAD RANGE INNOVATES THE TRADITIONAL CONSTRUCTION OF PADS, IMPROVING IMPACT ABSORPTION TO THE AREA THAT A BATSMAN NEEDS IT MOST - THE KNEE.

Without compromising the fit and comfort favoured by generations of cricketers, Masuri have taken the traditional batting pad and innovated it with our advanced Applied Technology offering higher levels of protection to the knee joint than ever seen before.

C LINE

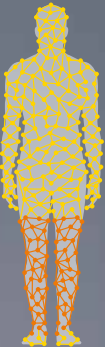
Featuring a core level of protection, this batting pad most resembles the product currently available on the market today but still features the construction, fit and applied technologies from the advanced models in the Masuri range.

T LINE

The most popular choice of batting pad within the range – this takes the traditional batting pad profile but advances its protective qualities by incorporating an unlaminated 10mm block variant of the KNEE BLADE.

E LINE

The ‘Players Pad’ - this batting pad is built to the shape, specification and comfort demanded by the highest level of professional players. Featuring the strongest composite of KNEE BLADE available via a 10mm laminated PRO FOAM and reinforced shin bolster.



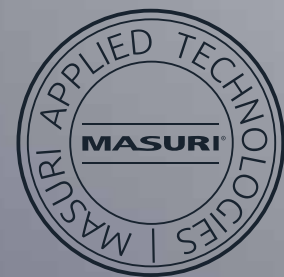
Model	E LINE	T LINE	C LINE	E LINE JR
Knee blade	ULTRA	EXTRA	STANDARD	STANDARD
Knee wing	✓	✓	✓	✓
PRO FOAM Top hat	✓	✗	✗	✗
PRO FOAM Shin liner	✓	✗	✗	✗
Socket knee bolster	✓	✓	✓	✓
Padded straps	✓	✗	✗	✗
Butterfly straps	✓	✓	✗	✗
PU instep	✓	✓	✗	✗
Mesh instep	✗	✗	✓	✓
Sizes	M, SM	M	M	YTH, J, JS

LEG PROTECTION

THIGH GUARD

THIGH PROTECTION
THAT PERFORMS AS A
PLAYER WANTS IT TO!

The Masuri thigh pad range is motivated by improving impact absorption and offering advanced slimline protection without impacting player movement or performance.



PRO-FOAMS®

A combination of different grades of foam utilising Masuri's unique research and development innovations. Different foam compositions ensure the optimum balance of protection and flexibility in high risk impact areas.



E LINE

THIGH PAD COMBO

This thigh pad combo is constructed in line with the shape and comfort preferred by the highest level of professional players. Featuring the strongest and most slimline composite of ULTRA PRO FOAMS and comfort foams available to offer a combination of premium impact absorption whilst maintaining a streamlined silhouette.

Available in Men's and Small Men's sizes.

T LINE

THIGH PAD COMBO

This thigh pad combo is for all playing levels. Featuring a strong composite of EXTRA PRO FOAMS and comfort foams offering impressive impact absorption without impacting performance.

Available in Men's, Youth and Junior sizes.



WICKET KEEPING

MASURI WICKET
KEEPING RANGEMASURI UNDERSTANDS THE
SPECIALIST ROLE PLAYED
BY THE WICKET KEEPER.

Masuri understands the specialist role played by the wicket keeper. Our product range includes a British-designed helmet, gloves constructed of premium grade aniline leather with rubber palms, short cuffs and PRO-FOAMS protection. Masuri wicket keeper pads and inners provide strength and comfort.

• See helmet page for more information on wicket keeping helmets.



WK HELMET

E LINE **T LINE**

U.K. designed and manufactured single shell protection, providing an affordable, lightweight and traditional style helmet. This model is designed with a scalloped shape in the rear of the helmet, making it ideal for wicket keeping.

WK PAD

E LINE

Worn by professional players and designed to their specifications. Slimline silhouette 2-piece construction. Pro-Foam shin liner. Padded 50mm straps

T LINE

Slimline traditional profile. Pro-Foam shin liner. Premium PU instep

C LINE

Slimline traditional profile. Pro-Foam shin liner. 50mm top and bottom straps



WICKET KEEPING

**E LINE****WK GLOVE**

Worn by professional players and designed to their specifications. Premium grade Aniline leather. Short cuff with internal Pro-Foam protection. Octopus grip rubber palm. Additional wear patch on index finger

T LINE**WK GLOVE**

Aniline leather. Octopus grip rubber palm. Short cuff with internal Pro-Foam protection. Mesh ventilation.

C LINE**WK GLOVE**

Premium PU construction. Octopus grip rubber palm. Short cuff with internal Pro-Foam protection. Contoured palm configuration.

**E LINE****WK INNER**

Worn by professional players and designed to their specifications. Padded chamois palm. Mesh panel for ventilation. Towelling wrist band with Velcro tab.

T LINE**WK INNER**

Padded chamois palm. Towelling wrist band with Velcro tab.



CRICKET BATS

MASURI JOINS FORCES WITH THE WORLD'S LARGEST BAT MANUFACTURER

In line with the new Masuri Protection Range, we are partnering with the world's largest bat manufacturer, Sareen Sports, to bring you a range of high-performance cricket bats selected by Masuri.

Once we decided that we needed a bat offering to accompany our market leading protection range, we knew there was only one place to go. Bat maker to the best players and biggest brands in the World, Sareen Sports Industries are the undisputed experts when it comes to cricket bats.

**"I WILL ENSURE THAT WE MAKE
A FANTASTIC BAT RANGE FROM
GREAT QUALITY WILLOW - WORTHY
OF THE PARTNERSHIP."**

Jatin Sareen *Founder of Sareen Sports Industries*



CRICKET BATS

WELCOME TO THE STRONGEST BATTING PARTNERSHIP IN CRICKET.

THIS IS A UNIQUE
COLLABORATION
BETWEEN THE CRICKET
PROTECTION SPECIALISTS -
MASURI - AND THE WORLDS
LARGEST BAT MAKER
- SAREEN SPORTS.

With a collective 100 years experience
in cricket these two brand giants have
worked together to bring you the finest
selection of cricket bats available.

C LINE

Selected from the top 15%
of available global English Willow.

Senior SH

T LINE

Selected from the top 4.5%
of available global English Willow.

Senior SH and LH

E LINE

Selected from the top 2%
of available global English Willow.

Senior SH, Junior H, 6, 5 and 4



E LINE

T LINE

C LINE

MASURI®

MASURI U.K.

+44 (0)1962 715 818 | info@masuri.com

The Masuri Group Ltd, Unit F, Wykeham Industrial Estate, Winnall, SO23 7RX

MASURI AUSTRALIA

+61 3 9036 8036 | aus-sales@masuri.com

Masuri Australia Pty Ltd, 5 Goodyear Drive, Thomastown, Victoria 3074

 [/MasuriHelmets](#)  [@masuri_official](#)  [linkedin.com/company/the-masuri-group](https://www.linkedin.com/company/the-masuri-group)